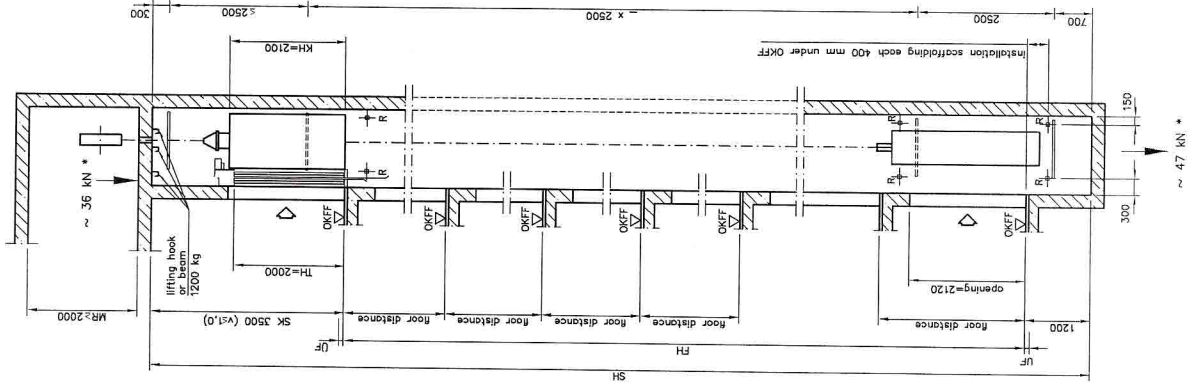




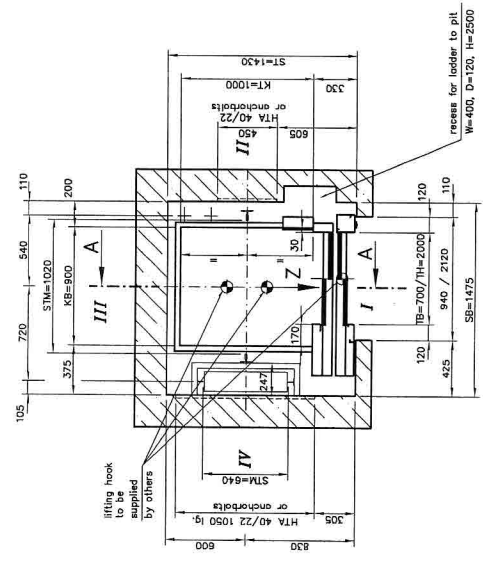
project:  
lift no.:  
LM reference no.:  
date

G.A Drawings  
as per EN 81-1  
Edition: 04/02

vertical section A - A

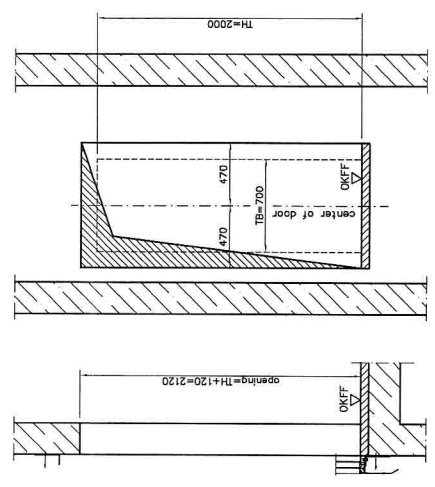


cross section of shaft



cut-out for door view Z

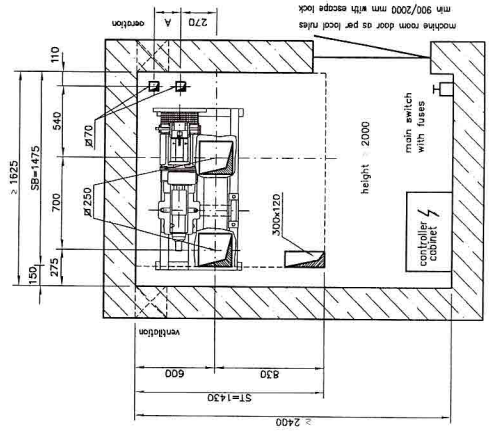
opposite cut-out for door mirror-inverted



overspeed governor  
v [m/s] ≤ 1,0  
A 200

- abbreviations used:
- KB = car width
  - KT = car depth
  - KH = car height
  - SB = shaft width
  - ST = shaft depth
  - SK = headroom
  - SH = total shaft height
  - FH = travel height
  - TB = door width
  - TH = door height
  - MR = machine room
  - OKFF = finished floor level
  - UF = top overtravel
  - UF = bottom overtravel
  - R = support for erection platform
  - R = max. operative load
- All dimensions in mm

Shaft dimensions are finished dimensions  
Tolerance in dimensions: - 15/4,25 mm



cross section of machine room





